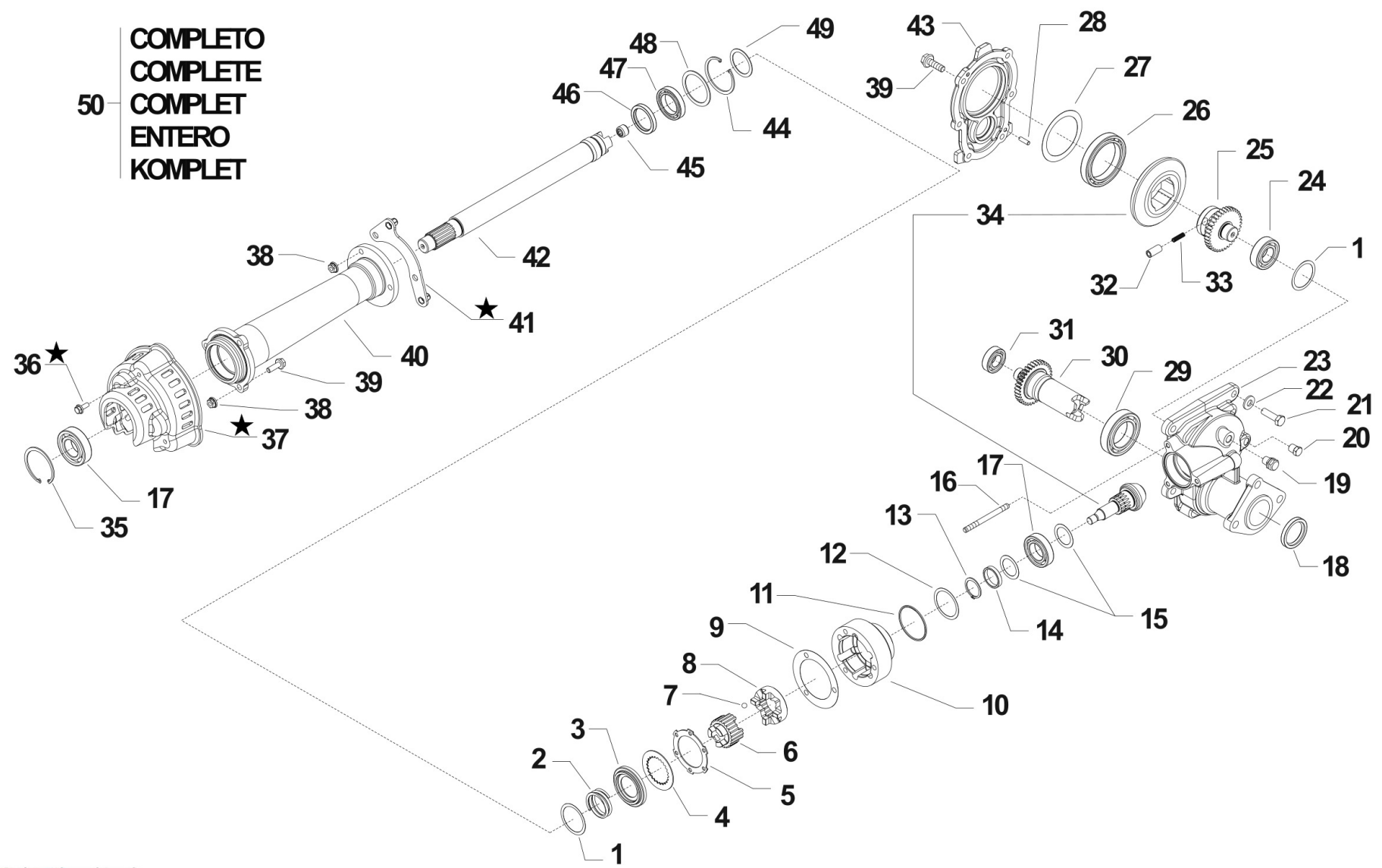


COMPLETO
 COMPLETE
 COMPLET
 ENTERO
 KOMPLET



i = info - stop 2 sec. ★ = new part



Pos.	Id	Q.ty	Description	Note
1	31400212		SHIM	
1	31400213		SHIM	
2	58059612		SPRING	
3	524C0816		PRESSURE PLATE	
4	56356212		DISC	
5	563C0818		BRAKE DISC	
6	524C0817		HUB	
7	37911032		BALL 5/16	
8	52459605		COUPLING	
9	580C0814		SHEATH	
10	524C0815N		BRAKE HOUSNG	
11	38115682		RING OR 3225 (56,82X2,62)	
12	31400215		SHIM	
12	31400216		SHIM	
13	35121030		SEEGER RING E 30 DIN 471	
14	56159677		SPACER	
15	58125949		SHIM	
15	58125950		SHIM	
16	31312097		STUD BOLT M8X98X16X28 8G	
17	37112299		BEARING 6206-2RS1 (306216)	
18	38214201		OIL SEAL 42X56X7	
19	59051045		PLUG	
20	30040001		PLUG 1/4 UNI 364	
21	31112212		SCREW TE M10X35 UNI 5739	
22	31421101		WASHER 10 DIN 679	
23	511C0655N		BODY	
24	37111255		BEARING 6205 (25X52X15)	
25	524C0857		DRIVEN GEAR Z35	
26	37111700		BEARING 61913 (65X90X13) SKF	



Pos.	Id	Q.ty	Description	Note
27	31400230		SHIM	
27	31400231		SHIM	
28	58043053		CYLINDRICAL PLUG	
29	37111450		BEARING 6009 (45X75X16)	
30	524C0813		DRIVEN GEAR	
31	F0812631000		BEARING 6004 (20X42/12)	
32	564C0858		CAP	
33	58029194		SPRING	
34	59359601		BEVEL GEAR	
35	35111062		SEEGER RING I 62 DIN 472	
36	31112085		SCREW TE M6X16 DIN 6921 8G	
37	552C0864		GUARD	
38	31241084		SELFLOCK NUT M8 6S	
39	31112166		SCREW TE C/F M8X25 DIN 6921 8G	
40	532C0811N		SLEEVE	
41	592C0866		CONNECTION	
42	564C0812		ALBERO BR110	
43	53259671N		COVER	
44	35111062		SEEGER RING I 62 DIN 472	
45	F0812504050		BUSHING HK1212	
46	38213801		OIL SEAL 38X50X7	
47	37111357		BEARING 61907 (35X55X10)	
48	31400222		SHIM PS 50x62/1,5	
49	31400203		SHIM PS 35,0x45/1	
50	592C0810		SCATOLA TRASMIS.BLADER.110C.TA	

